



Fluid Valve

Valve Solutions & Automation Systems

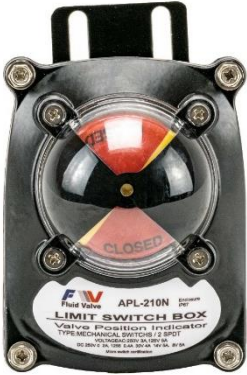
Catalogue of fluid valve for Limit Switch Boxes



Fluid Valve Company

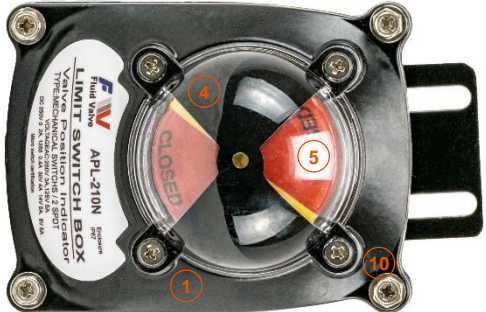
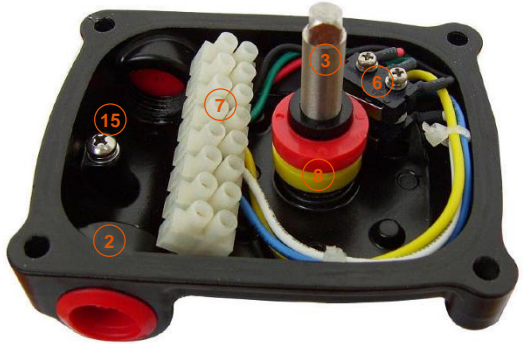
210 N Limit Switch Boxes (Mechanical Sensor)

210 N Limit Switch Boxes (Mechanical Sensor)



- Mini-type aluminum die-casting cover and housing with powder coated in any colors.
- Secure waterproof, multi-angles visual valve positions involving top and side view.
- With spring loaded splined cam, no need to adjust again after initial setting and Easy setting without tool.
- Standard 8 points and enough strips for connection.
- Dual cable entries: 2xG1/2 (Standard); 2-M20x1.5 or 2x1/2NPT(Option).
- No worry to loose bolts while cover opens with captive cover bolts.
- NAMUR standard shaft and bracket.
- Weather proof is IP67.
- 2-SPDT mechanical switches as standard (5A125-250VAC).

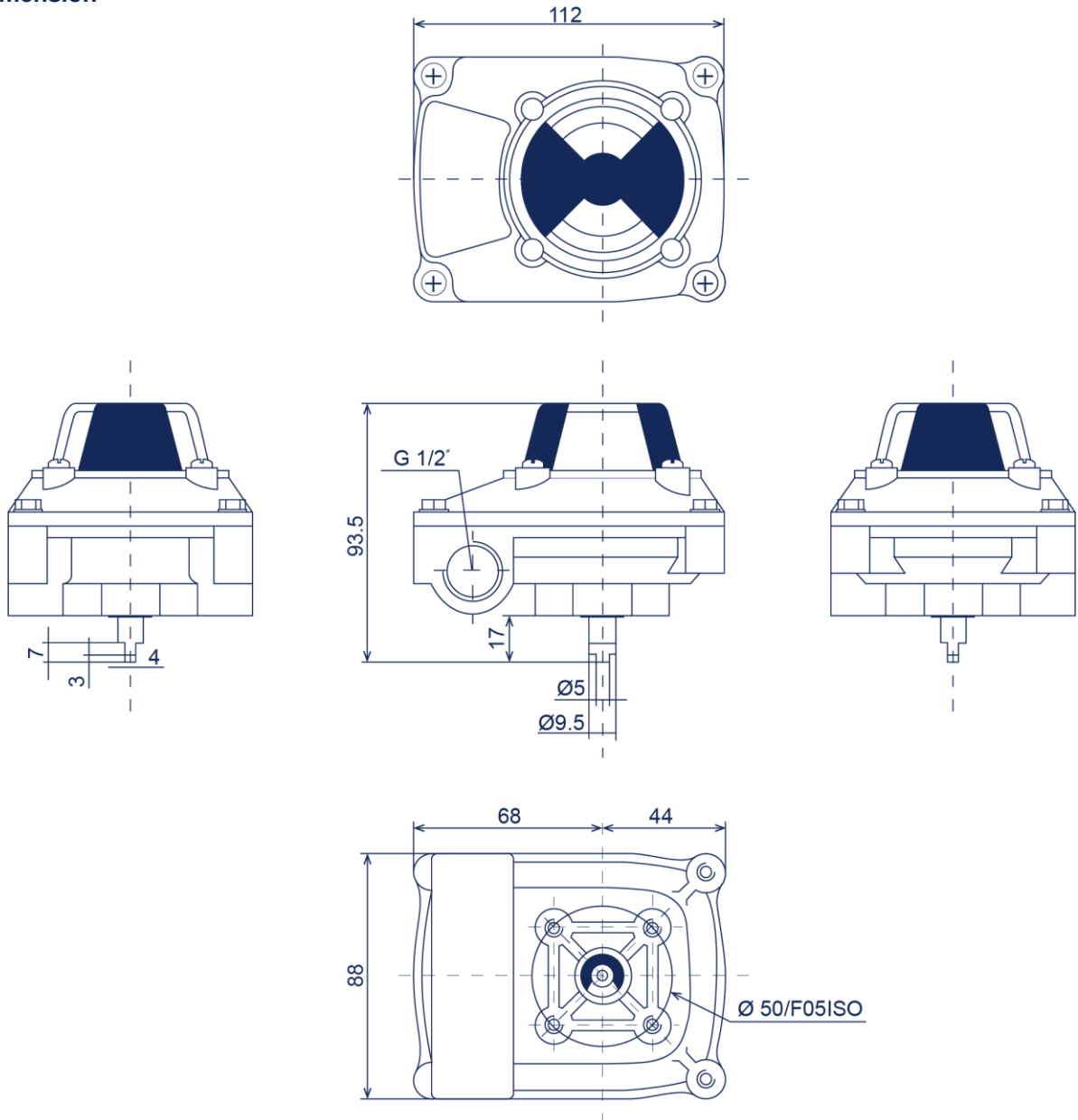
Structure and Material (CNK-210N)

No.	Part Name	Qty.	Material	Picture
1	Box Cover	1	Aluminum Die Casting	 
2	Box Body	1	Aluminum Die Casting	
3	Shaft	1	Stainless Steel	
4	Indicator Cover	1	Polycarbonate	
5	Indicator	1	ABS/Polycarbonate	
6	Switch	2	Mechanical	
7	Terminal Strip	8	Polycarbonate Tin Plated Brass Stainless Steel	
8	Cam	2	Polycarbonate	
9	Spring	1	Stainless Steel	
10	Bolts	4	Stainless Steel	
11	Shaft O-ring	1	NBR	
12	Body O-ring	1	NBR	
13	Indicator O-ring	1	NBR	
14	Bushing	1	Bronze	
15	Earth Lug	1	Stainless Steel	
16	E-ring	1	Stainless Steel	

Specification

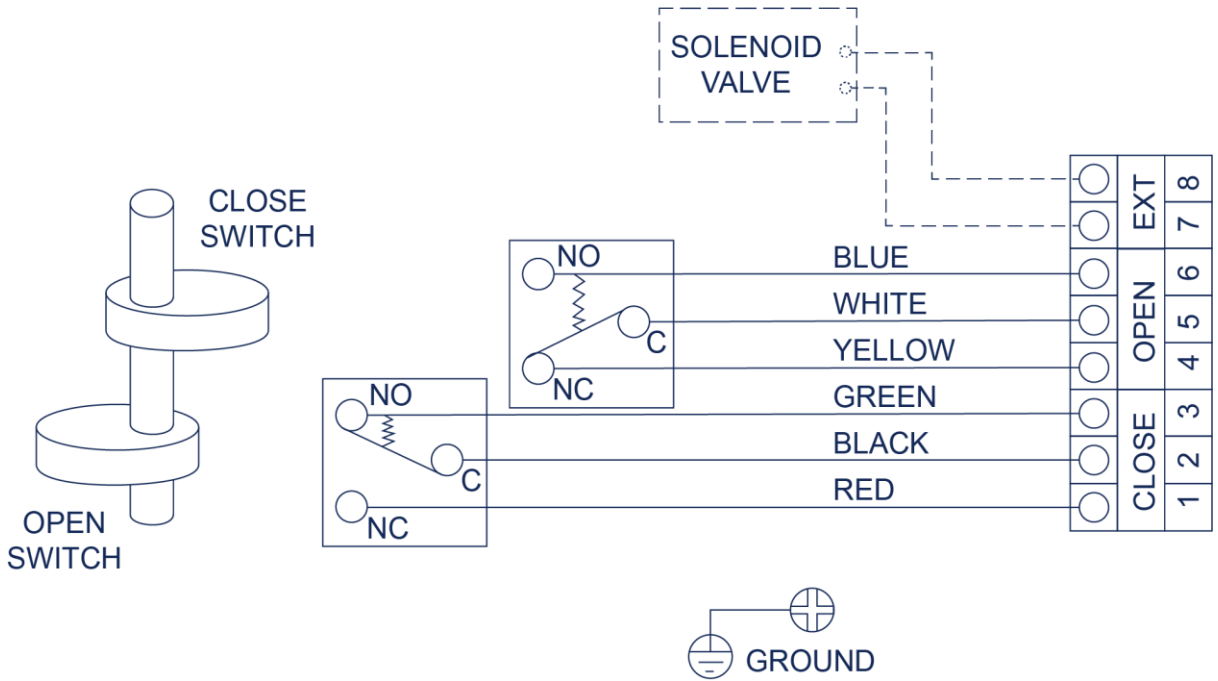
Model	Weather proof	Temperature Range	Cable Entry	Terminal Strips	Position Indicator	Switches
210N	IP67	-20? ~ 85?	2xG1/2 (2x1/2NPT 2- M20x1.5)	8 Points	0.90° Open-Yellow Close-Red	Mechanical (5A125-250VAC)

Dimension

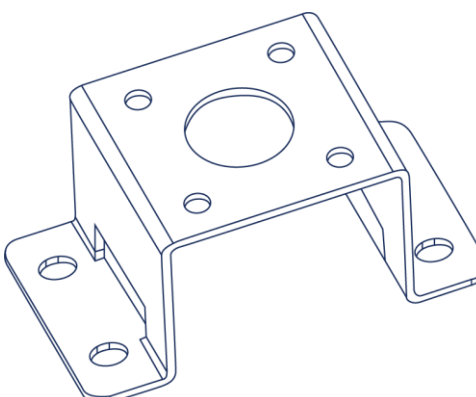


Wiring

(2 SPDT) WIRING DIAGRAM

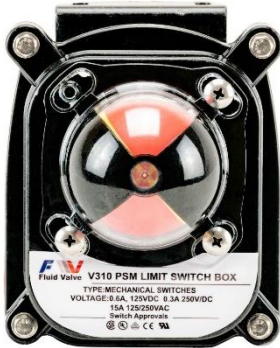


Mounting Bracket

Picture	Material	Application
	Steel plate	30 x 80 H:20
	Stainless steel (304)	
	Steel plate	30 x 80 H:30
	Stainless steel (304)	

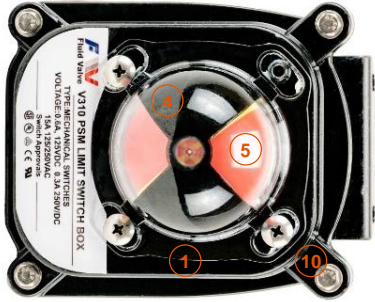

310 N Limit Switch Boxes (Mechanical Sensor)

310 N Limit Switch Boxes (Mechanical Sensor)



- Aluminum die-casting housing and powder coated
- Secure waterproof, multi-angles visual valve positions involving top and side view
- Spring loaded splined cam. No need to adjust again after initial setting and Easy setting without tool
- Standard 8 points and enough strips for connection(10 points for optional)
- Dual cable entries: 2xG1 /2 (Standard) and 2- M20x1.5, 2X1/2NP T (Optional)
- No worry to loose bolts while cover opens with captive cover bolts
- NAMUR standard steel plate or stainless steel (optional) shaft and bracket
- Weather proof is IP 67.
- 2-SPOT mechanical switches as standard (0.6A/125VDC, 0.3A/250VDC, 15A/1/2HP 125-250VAC)

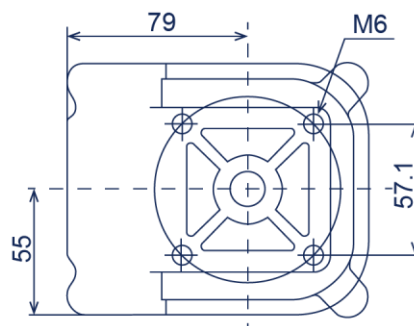
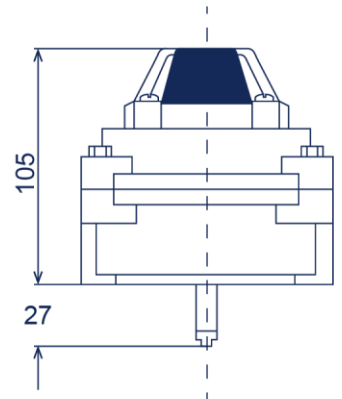
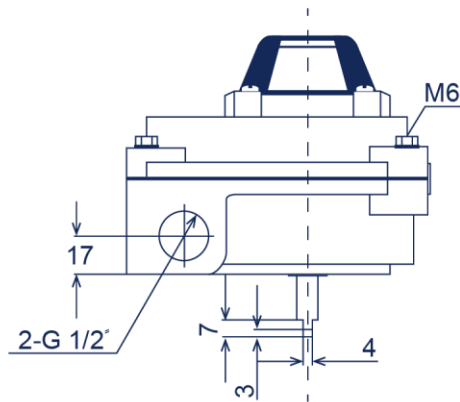
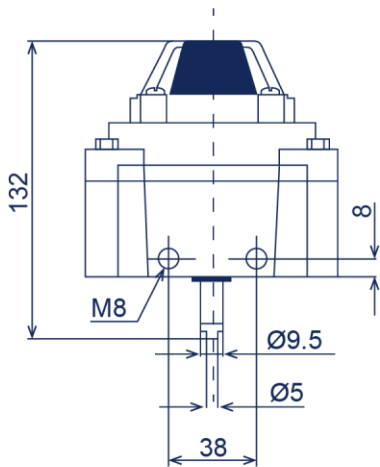
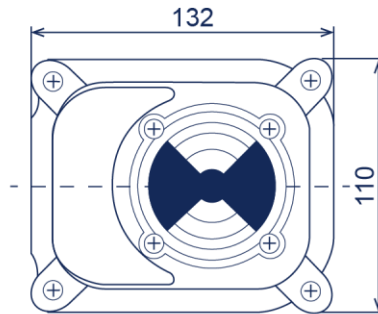
Structure and Material

No.	Part Name	Qty.	Material	Picture
1	Box Cover	1	Aluminum Die Casting	 
2	Box Body	1	Aluminum Die Casting	
3	Shaft	1	Stainless Steel	
4	Indicator Cover	1	Polycarbonate	
5	Indicator	1	ABS/Polycarbonate	
6	Limit Switch	2	Mechanical	
7	Terminal Strip	8	Polycarbonate Tin Plated Brass Stainless Steel	
8	Cam	2	Polycarbonate	
9	Spring	1	Stainless Steel	
10	Cover Bolts	4	Stainless Steel	
11	Shaft O-ring	2	NBR	
12	Housing O-ring	1	NBR	
13	Indicator O-ring	1	NBR	
14	Bushing	2	Bronze	
15	Earth Lug	1	Stainless Steel	
16	E-ring	2	Stainless Steel	

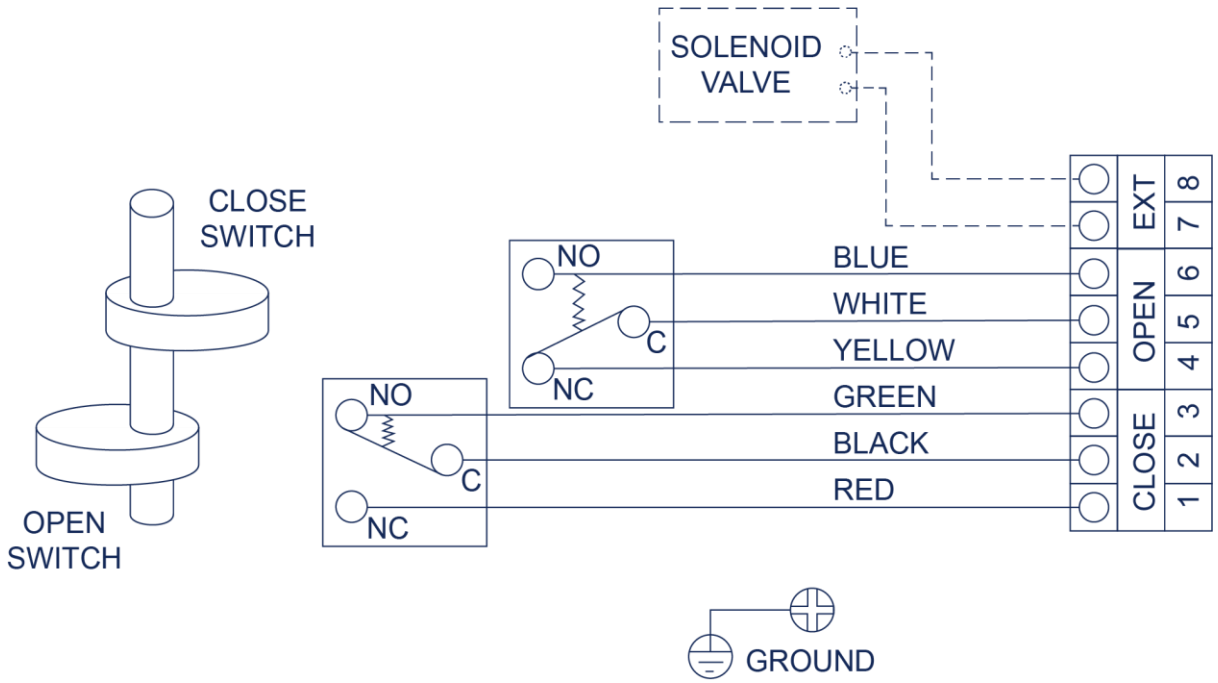
Specification

Model		Weather proof	Temperature Range	Cable Entry	Terminal Strips	Position Indicator	Switches
310N	Standard	IP67	-20? ~ 85?	2xG1/2	8 Points	0.90° Open-Yellow Close-Red	Mechanical (15A125-250VAC)
	Option			2-M20x1.5 2x1/2NPT	9~24 Points		

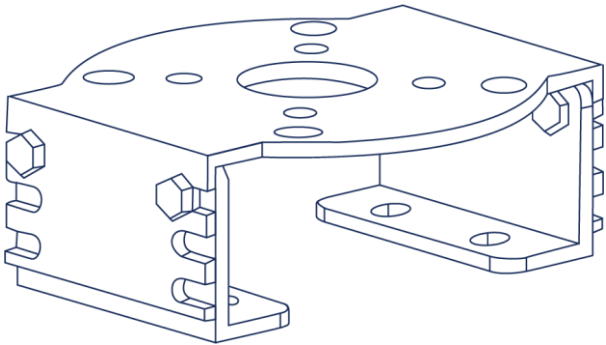
Dimension



(2 SPDT) WIRING DIAGRAM



Mounting

Model	Picture	Material	Application
MB-3.3		Steel plate	30x80(130) H:20~30
		Stainless steel	

510 N Limit Switch Boxes (Explosion Proof)

510 N Limit Switch Boxes (Mechanical Sensor)

Design & features

510 series are designed suitable for valve and actuators in hazardous area application, having compact but robust construction conforms to EN50014 and 50018, also suitable in Zone 1 and 2, and ingress protection IP67. Standard aluminum housing provides reliable explosion proof performance.



The 510 Series Limit Switch Boxes have three models. One is 510 N (mechanical), second is 520N (Proximity Sensor), and third is 530N (4-20mA feedback).

- Aluminum die-casting housing and powder coated
- Secure waterproof, multi-angles visual valve positions involving top and side view
- Spring loaded splinted cam. No need to adjust again after initial setting and Easy setting without tool
- Standard 8 points and enough strips for connection (10 points for optional)
- Dual cable entries: 2 x G1/2 (Standard) and 2-M20 x 1.5, 2X1/2NPT (Optional)
- No worry to loose bolts while cover opens with captive cover bolts

-NAMUR standard shaft and bracket

- Explosion proof is ExdIIBT6 (standard).

-2-SPDT mechanical switches as standard (0.6A125VDC, 0.3A250VDC, 16A125/250VAC) and Proximity sensors as option (P16AM-D3N:8~30VDC<=150mA or P&F sensors NJ2-V3-N:8VDC,Detected<=1mA,Not detected>=3mA)

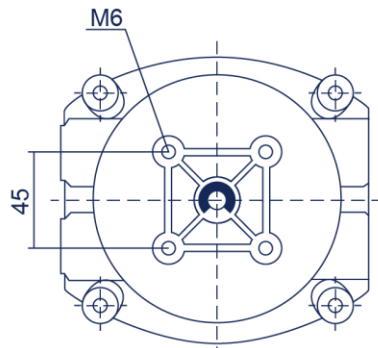
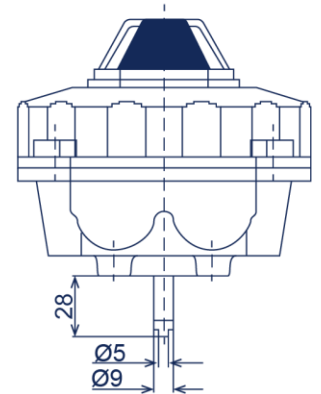
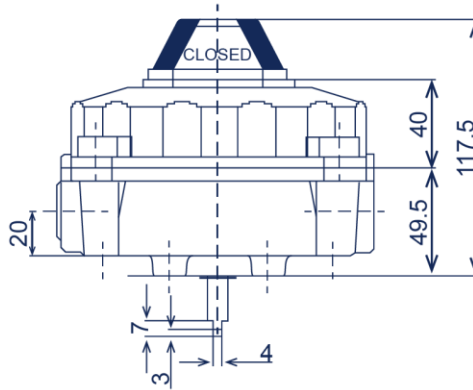
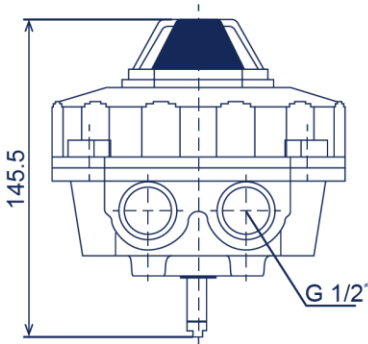
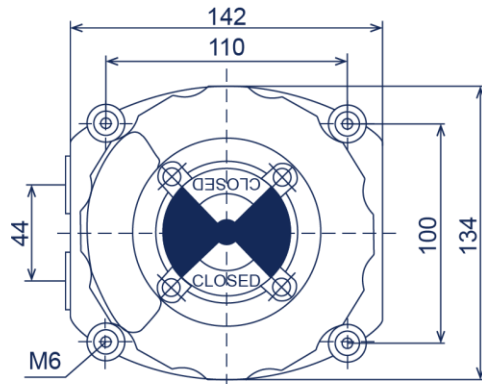
Structure and Material

No.	Part Name	Qty.	Material	Picture
1	Box Cover	1	Aluminum Die Casting	
2	Box Body	1	Aluminum Die Casting	
3	Shaft	1	Stainless Steel	
4	Indicator Cover	1	Polycarbonate	
5	Indicator	1	ABS/Polycarbonate	
6	Limit Switch	2	Mechanical	
7	Terminal Strip	8	Polycarbonate Tin Plated Brass Stainless Steel	
8	Cam	2	Polycarbonate	
9	Spring	1	Stainless Steel	
10	Cover Bolts	4	Stainless Steel	
11	Shaft O-ring	2	NBR	
12	Housing O-ring	1	NBR	
13	Indicator O-ring	1	NBR	
14	Bushing	2	Bronze	
15	Earth Lug	1	Stainless Steel	
16	E-ring	1	Stainless Steel	

Specification

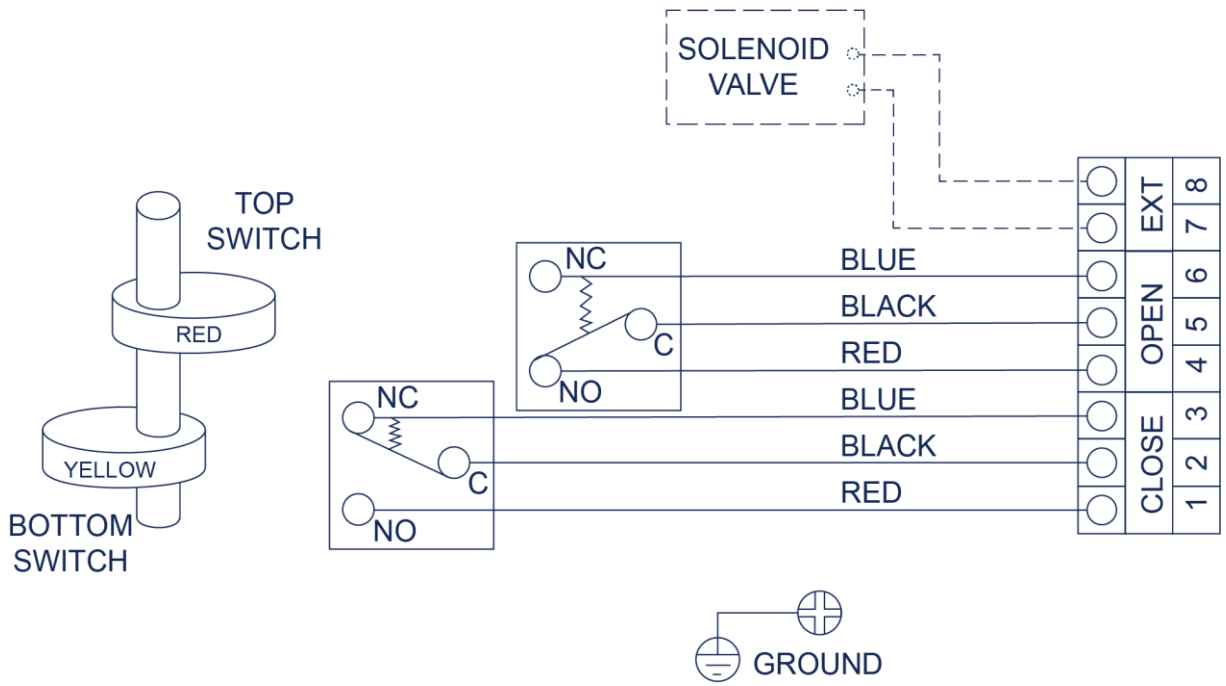
Model	Weather proof	Enclosure	Ambient	Cable Entry	Terminal Strips	Position Indicator	Switches
510N	IP67	ExdIIBT6 (ExdIICT6)	-20°C ~ 85°C	2xG1/2 (2-M20x1.5, 2x1/2NPT)	8 Points (9~12Points)	0.90° Open-Yellow Close-Red	Mechanical (16A125-250VAC)

Dimension

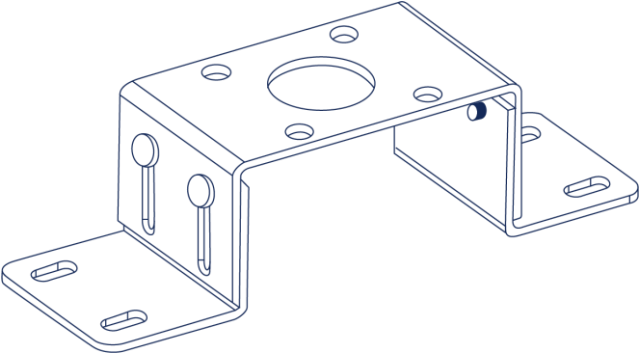


Wiring

MECHANICAL SWITCHES WIRING DIAGRAM



Bracket

Model	Picture	Material	Application
MB-5.1		Steel plate	30x130 H:30~50
		Stainless steel	